



Authentic Spanish Mission Tile

Mexican Traditions
P.O. Box 67, Lambeth Station
London, ON N6P 1P9

(519) 652-9787
www.mexitraditions.com

Spanish Mission Tile San Luis Potosi, Mexico



S100 WHITE



S101 BLACK



S102 CLAM



S103 NARANJA



S104 CAFE



S105 ROSA



S106 GRAY



S107 TERRACOTTA



S108 NAVY



S109 GOLD



S110 GREEN



S111 D'HANIS



S113 TAUPE



S114 SAGE



S115 ADOBE



S117 HEATHER



S118 PEACOCK



S119 BLUE



S120 AQUA



S121 VERDE



S122 SAND



S123 MELON



S160 AZUL



S225 MOHAVE



S900 GRIS



S901 BRUN



S902 BLANC



S903 SALMON



S904 ROUGE



S905 CAMEL



S906 CHOCOLATE



S907 JUANE



S908 JUANE



S909 VERT



S910 VERT



S911 BLUE



S912 BLUE

Spanish Mission Tile San Luis Potosi, Mexico

Technical Information

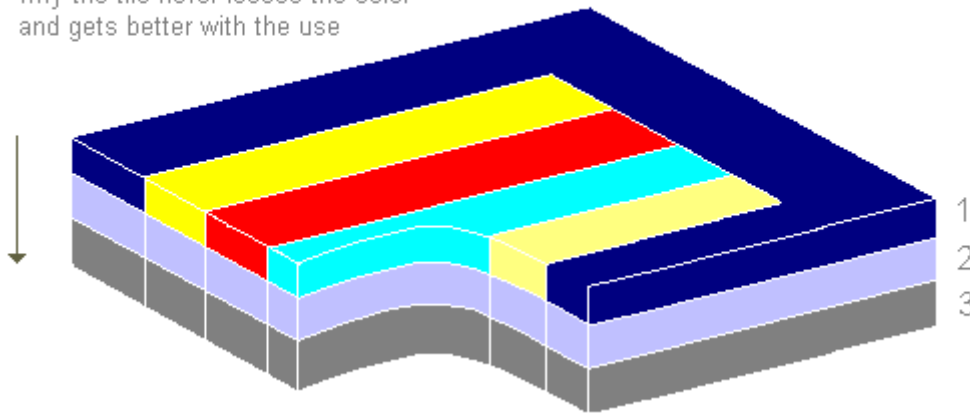
All of our tiles are built with **three layers** that can be seen in a crosssection view.

The first layer: The wear layer or tile face is a mixture of highly resistant Portland white cement, powdered white marble and colorants. Wear resistance, color and brightness rely on the quality of this layer.

The second layer: It is a mortar made of fine sand and standard Portland gray cement. For tile manufacturing, this mortar is applied as a base and reinforces the first layer, providing the ability to withstand compression loads which some times may be high for the finished product.

The third layer: Is a porous mixture with the required thickness for impact strength before and after installation.

The color goes through the entire layer, it is not just a print. That's why the tile never loses the color and gets better with the use



A good tile should be absolutely **compact & waterproof** which is accomplished by using mixtures rich in high quality cement, mechanically mixed and manufactured under high pressure. In addition, a thorough curing process is used.

This product is **100% hand crafted**, paying attention to individual design and color specifications.

The tile is not a pollutant because it is manufactured with **100% natural materials**.

Spanish Mission Tile San Luis Potosi, Mexico

The tile does not contain any lead, is not flammable and is **100% recyclable**.

Tiles feel cool in hot weather places and are not slippery to the bare foot.

Tiles can be manufactured to any design, shape, size or color.

Coloring materials are all natural too.

Quality control is performed on an individual basis (piece by piece) not by production lot.

Applications

Tiles may be used to cover floors, walls, table tops, counter tops, swimming pools, facades, etc. either in-doors or outdoors.

Tiles may be designed to accommodate any architectural style such as Spanish colonial, Santa Fe, or Moorish, to name a few. However, any unique style requirements can be fulfilled.

Specifications

- Tile thickness: 0.64 in.
- Face or wear thickness: 0.12 to 0.16 in.
- Sizes: from 3 x 3, 4 x 4, 4 x 8, 6 x 6,
2 x 8, 8 x 8, 10 x 10, 6 x 12, 4 x 12, 12 x 12 to 16 x 16 in.

Finish options for wear face:

- a) Smooth: in-door application.
- b) Rough: outdoor and in-door applications.
- c) Engraved: outdoor and in-door applications.

- Weights:

SIZE	WEIGHT/TILE	TILES / BOX
12 x 12 in.	7 lb.	5 pieces.
8 x 8 in.	3 lb.	10 pieces.

**Spanish Mission Tile
San Luis Potosi, Mexico**

The tiles may suffer color tone changes due to marble nature which is not uniform. Care must be taken when using oils, greases or varnish as tiles may stain, should be protected by a layer of rubber, plastic, paper, resin or polyform. You should protect them with a special sealer if you are planning to install them outdoors directly in contact with the sunshine.

Spanish Mission Tile, San Luis Potosi, Mexico



OM-001



OM-002



OM-003



OM-004



OM-005



OM-006



OM-007



OM-008

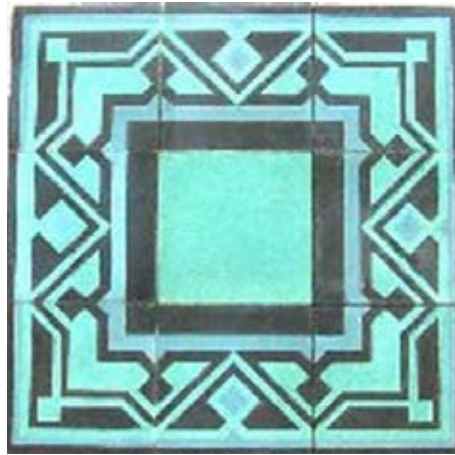


OM-009

Spanish Mission Tile, San Luis Potosi, Mexico



OM-010



OM-011



OM-012



OM-013



OM-014



OM-015



OM-016



OM-017



OM-018

Spanish Mission Tile, San Luis Potosi, Mexico



OM-019



OM-020



OM-021



OM-022



OM-023



OM-024



OM-025



OM-026

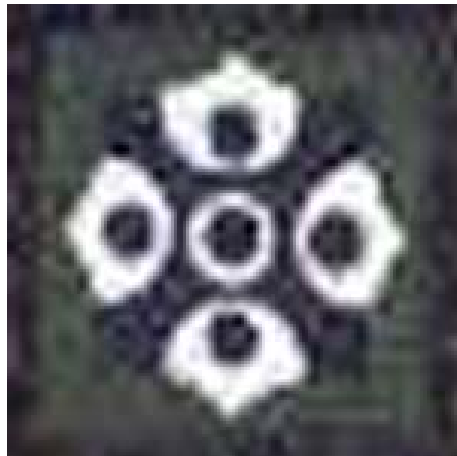


OM-027

Spanish Mission Tile, San Luis Potosi, Mexico



OM-028



OM-106



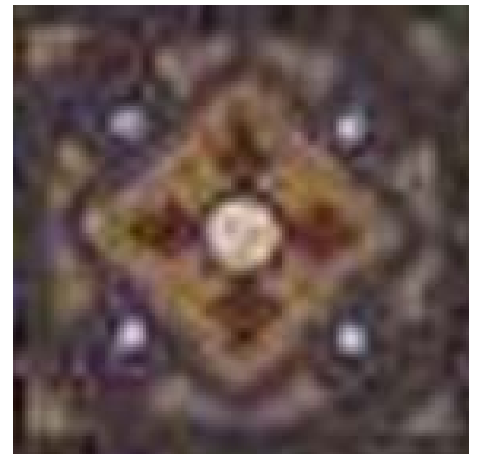
OM-107



OM-108



OM-109



OM-110



OM-111



OM-112

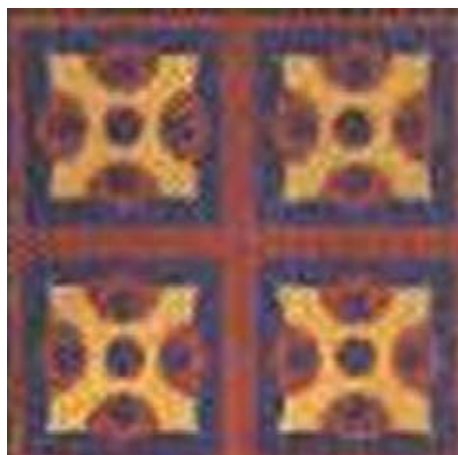


OM-113

Spanish Mission Tile, San Luis Potosi, Mexico



OM-114



OM-115



OM-116



OM-117



OM-118



OM-119



OM-120

Spanish Mission Tile, San Luis Potosi, Mexico



OM-112



OM-201



OM-202



OM-203



OM-204



OM-205



OM-206



OM-207



OM-208



OM-209



OM-210



OM-211



OM-212



OM-213



OM-214



OM-215



OM-221



OM-222



OM-223



OM-224